

Assistive products for blind and vision-impaired persons  
Tactile walking surface indicators



# TAKTILA™

## Tactile guidance system



NORWEGIAN TACTILE INDICATORS  
DESIGNED FOR INDOOR USE  
FOSSIL-FREE MATERIAL  
ENVIRONMENTAL PRODUCT DECLARATION

**TAKTILA™**  
[www.taktila.no](http://www.taktila.no)

MADE FROM  
100% RECYCLED MATERIAL

# FUNCTIONAL DESIGN AND ROBUST QUALITY

TAKTILA™ is a series of high-quality tactile indicators that can withstand hard use and are suitable for busy locations. The components are made from a recycled composite plastic material reinforced with glass for heavy wear, year in year out.

The products are supplied with **3M™VHB™ TAPE** – the strongest tape on the market. The dust-free and permanent affixing method offers immediate strength and long-lasting durability. This is why we are able to offer a five-year adhesion warranty on our products.



THE LIGHTLY ROUNDED DESIGN AND FLAT TOP MAKE THE COMPONENTS EASY TO DETECT WITH A MOBILITY CANE. THE RISK OF STUMBLING IS REDUCED TO A MINIMUM AND THEY ARE EASY TO NAVIGATE USING A WHEELED ITEM.

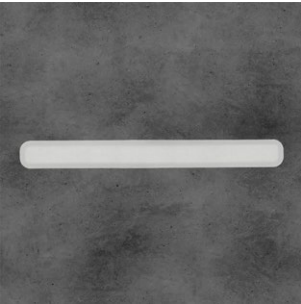
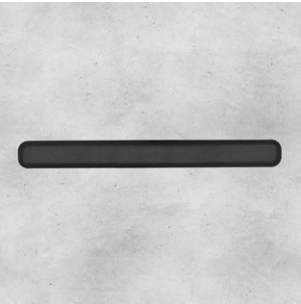


PRODUCTS



TACTILE INDICATOR LONG - 280mm

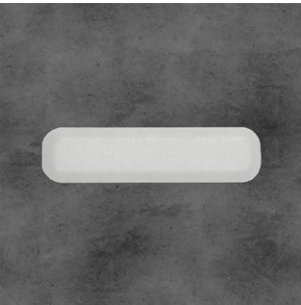
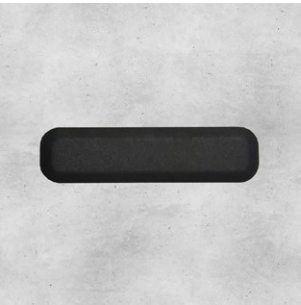
The components are designed for indoor use for marking stairs and lifts, or can be used for tactile guidance between important parts of a building. The components are made from a recycled composite plastic material reinforced with glass for heavy wear. The products are supplied with 3M™VHB™ Tape.



- MEASUREMENTS L: 280mm / W: 30mm / H: 3,6mm
- SLIP RESISTANCE R10 (IAW. DIN 51130-2104)
- TAPE 3M™ VHB™
- MATERIAL PA 15%gf ♻️
- COLOURS
  - NCS 8000-N
  - NCS 3000-N
  - NCS 9000-N

TACTILE INDICATOR SHORT - 120mm

The components are designed for indoor use for marking stairs and lifts, or can be used for tactile guidance between important parts of a building. The components are made from a recycled composite plastic material reinforced with glass for heavy wear. The products are supplied with 3M™VHB™ Tape.



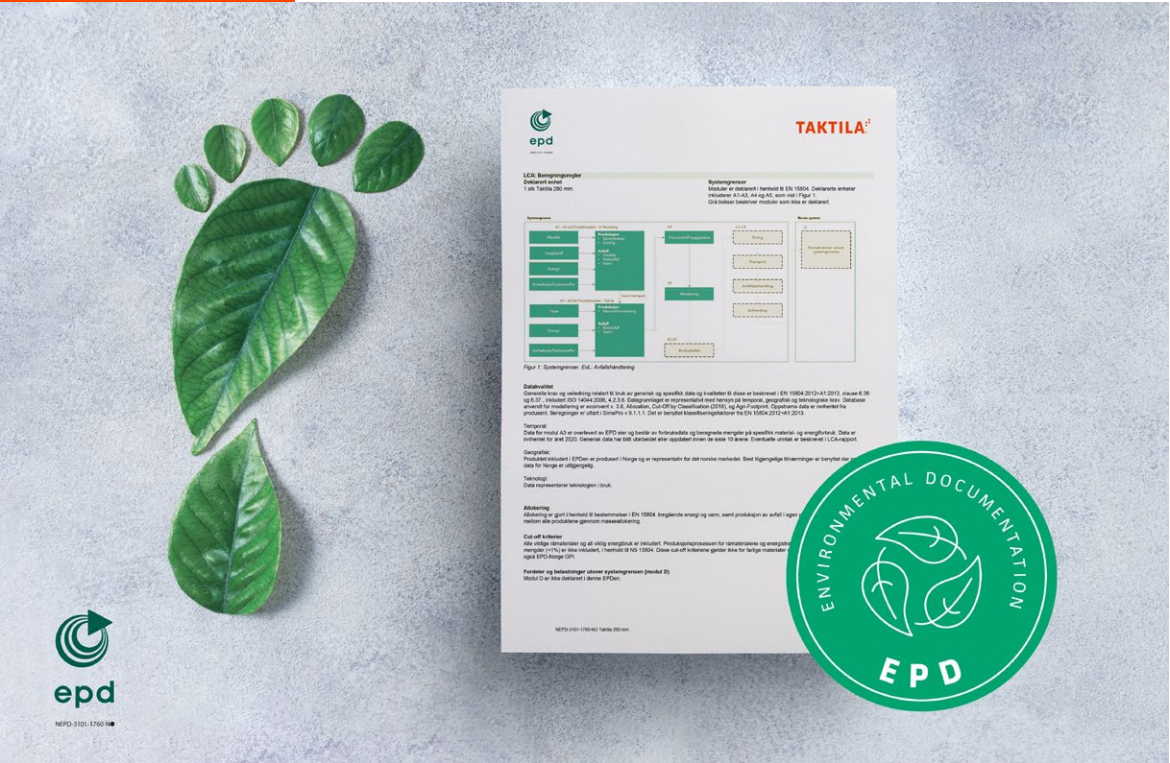
- MEASUREMENTS L: 280mm / W: 30mm / H: 3,6mm
- SLIP RESISTANCE R10 (IAW. DIN 51130-2104)
- TAPE 3M™ VHB™
- MATERIAL PA 15%gf ♻️
- COLOURS
  - NCS 8000-N
  - NCS 3000-N
  - NCS 9000-N

TACTILE STUD - Ø 30mm

The components are designed for indoor use for marking stairs and lifts to warn of approaching steps or hazards. The components are made from a recycled composite plastic material reinforced with glass for heavy wear. The products are supplied with 3M™VHB™ Tape



- MEASUREMENTS Ø: 30mm / H: 3,6mm
- SLIP RESISTANCE R10 (IAW. DIN 51130-2104)
- TAPE 3M™ VHB™
- MATERIAL PA 15%gf ♻️
- COLOURS
  - NCS 8000-N
  - NCS 3000-N
  - NCS 9000-N



ENVIRONMENTAL PRODUCT DECLARATION

Growing focus on sustainability in the architecture and construction sector is increasing demand for eco-friendly solutions.

To ensure greener production and help to create a demand for recycled plastics, Taktila™ manufactures our tactile indicators from recycled PA rather than virgin plastic. For each kilogram of recycled plastic used, we estimate savings in raw materials and energy equivalent to 2 kg of crude oil.

Environmental Product Declarations (EPD) and Life Cycle Assessments (LCA) have been completed for Taktila’s products.

**What is an EPD?**  
An Environmental Product Declaration (EPD) is an independently verified and registered document that communicates transparent and comparable data and other relevant environmental information about the life-cycle environmental impact of a product.





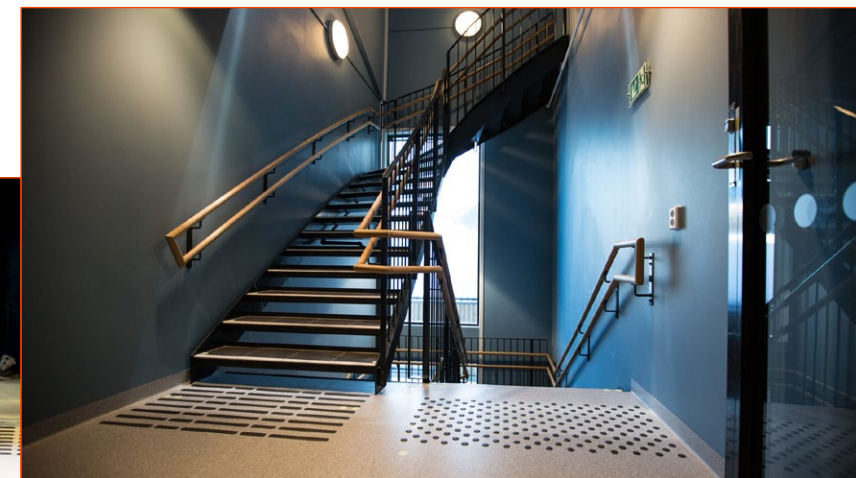
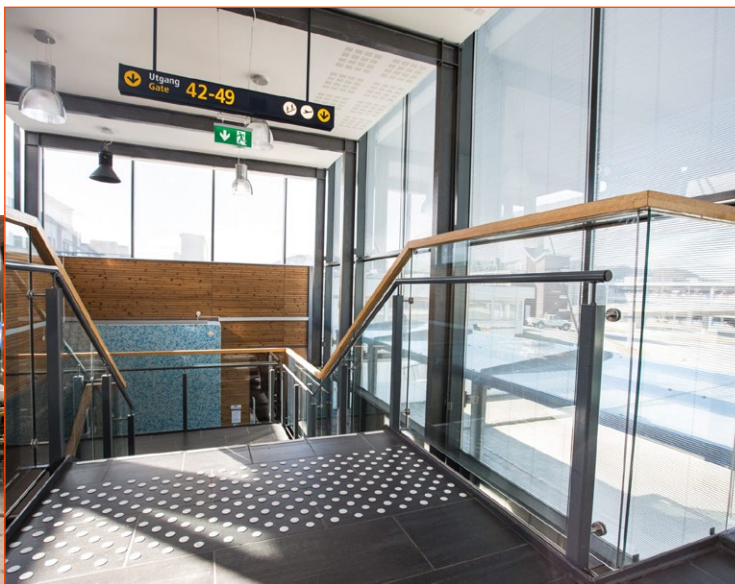
### DUST-FREE AND NOISE-FREE INSTALLATION

The components are supplied with 3M™ VHB™ Tape and our templates will ensure accurate and easy installation every time. Other components that require drilling and adhesives generate more dust and create more noise. They also require more equipment in order to be installed.



### FIVE-YEAR ADHESION GUARANTEE

If you purchase Taktila™ components, you will receive a five-year warranty. If any components should become loose during the warranty period, we will replace them free of charge. The product is supplied with a very hard-wearing tape with a ductile foam core that provides good adhesion to most surfaces.





## CIRCULAR ECONOMY



Taktila™ has changed its production method and is now greener and more environmentally aware, focusing on the life cycle of both materials and products. This is why we have chosen to replace the original oil-based material in our components with a recycled material. This material comprises recycled PA plastic reinforced with glass, which is reused as a raw material in our products.

We want new buildings to be greener and even the small details can make a difference.

**TAKTILA™**  
Leading the way

[www.taktila.no](http://www.taktila.no)

CONTACT